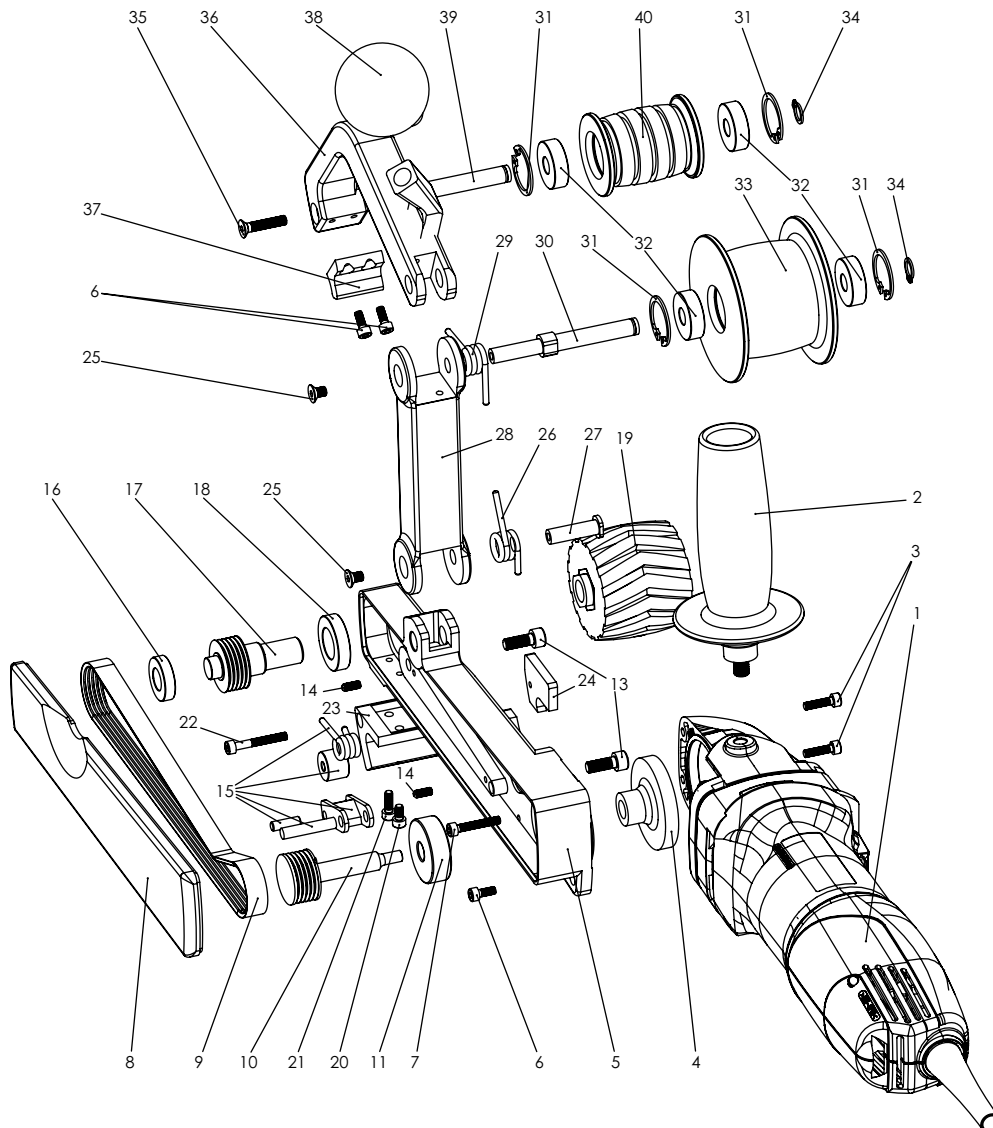


EXPLODED VIEW



original[®]
Finitube

SMFTNA - SMFTNB



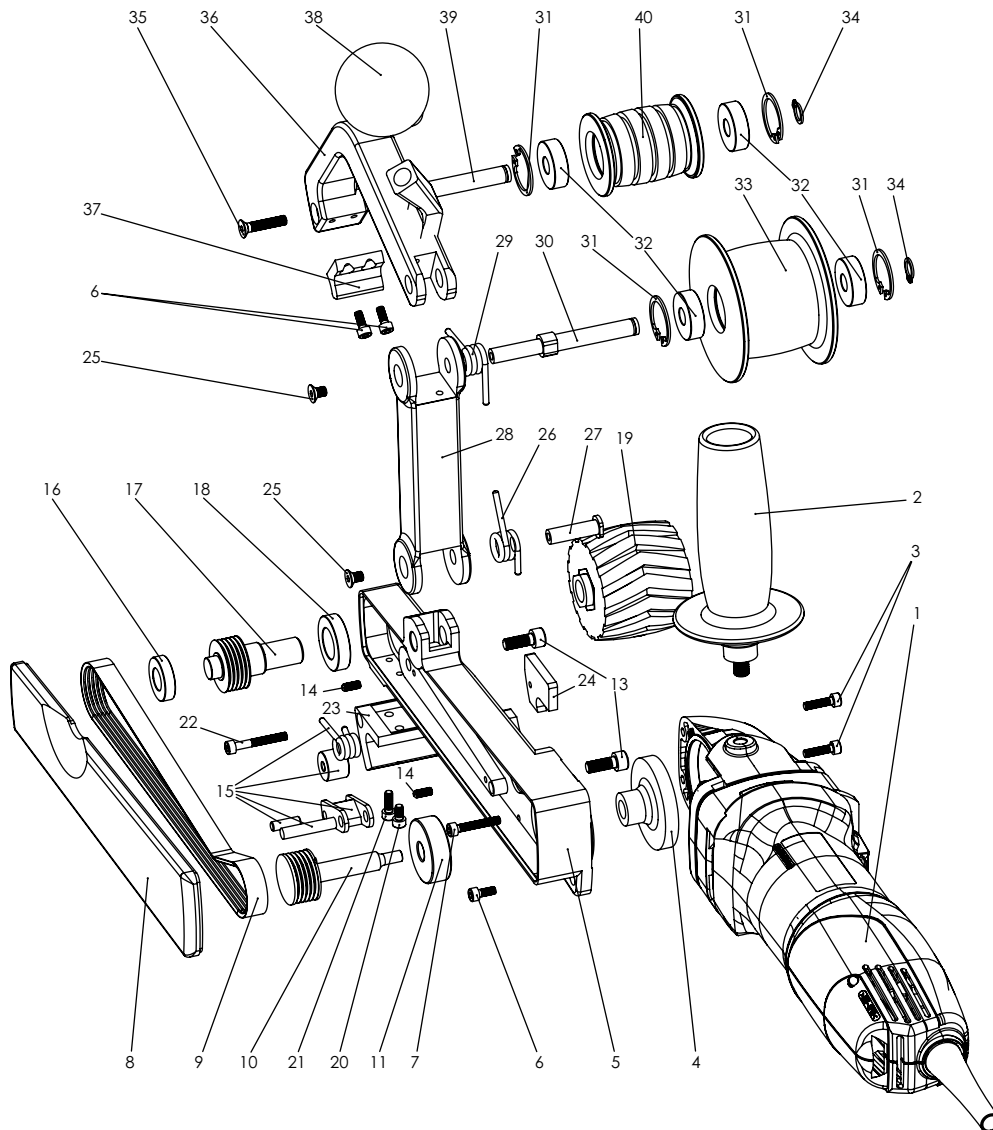
No.	Description	Code	Number
1	Motor	SMFTNA/001 (220V) OR SMFTNB/001 (110V)	1
2	Handle	SMFTN/002	1
3	Socket-head screw M4 x 16 DIN 912	SMFTN/003	2
4	Toothed wheel	SMFTN/004	1
5	Base piece	SMFTN/005	1
6	Socket-head screw M4 x 10 DIN 912	SMFTN/006	3
7	Socket-head screw M4 x 25 DIN 912	SMFTN/007	1
8	Lid	SMFTN/008	1
9	Multi V-belt	SMFTN/009	1
10	Drive shaft motor side	SMFTN/010	1
11	Ball bearing drive shaft motor side	SMFTN/011	1
12	Spacer ring	SMFTN/012	1
13	Socket-head screw M6 x 16 DIN 912	SMFTN/013	2
14	adjuster screw M4 x 10 DIN 916	SMFTN/014	2
15	Riemspannerset: Hinge shaft belt tensioner Bearing shaft belt tensioner Bearing belt tensioner Tensioning spring belt tensioner Assembly piece belt tensioner	SMFTN/015	1
16	Ball bearing 1 drive shaft	SMFTN/020	1
17	drive shaft	SMFTN/021	1
18	Ball bearing 2 drive shaft	SMFTN/022	1
19	Drive wheel	SMFTN/023	1
20	Socket-head screw M4 x 8 DIN 912	SMFTN/024	1

EXPLODED VIEW



original®
Finitube

SMFTNA - SMFTNB



No.	Description	Code	Number
21	Socket-head screw M4 x 12 DIN 912	SMFTN/025	1
22	Socket-head screw M4 x 30 DIN 912	SMFTN/026	1
23	support	SMFTN/027	1
24	wearing plate	SMFTN/028	1
25	Socket-head screw M5 x 8 DIN 7991	SMFTN/029	1
26	tension spring lower arm	SMFTN/030	1
27	hinge shaft lower arm	SMFTN/031	1
28	lower arm	SMFTN/032	1
29	tension spring upper arm	SMFTN/033	1
30	hinge shaft upper arm	SMFTN/034	1
31	Circlips internal Ø 26 DIN 472	SMFTN/035	4
32	Ball bearing runner wheel	SMFTN/036	4
33	Runner wheel lower arm	SMFTN/037	1
34	Circlips external Ø 9 DIN 471	SMFTN/038	2
35	Socket-head screw M5 x 25 DIN 7991	SMFTN/039	1
36	upper arm	SMFTN/040	1
37	bumper	SMFTN/041	1
38	round handle	SMFTN/042	1
39	rotary shaft runner wheel upper arm	SMFTN/043	1
40	runner wheel upper arm	SMFTN/044	1